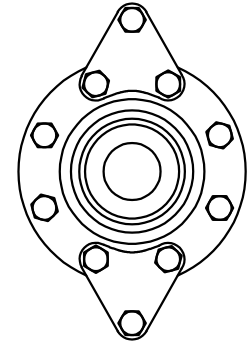
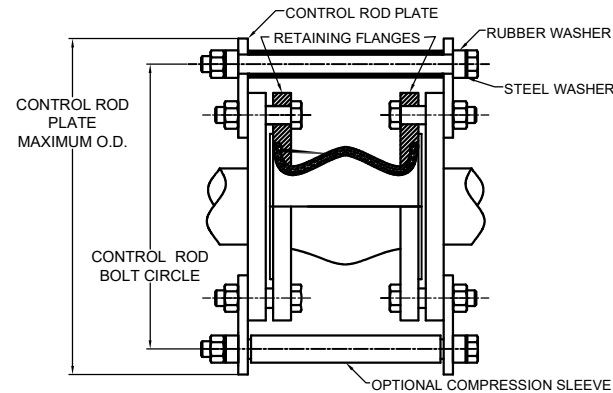
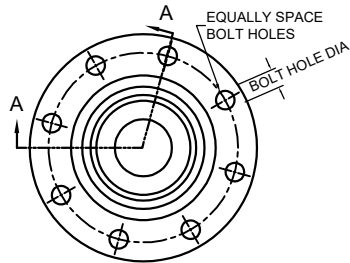
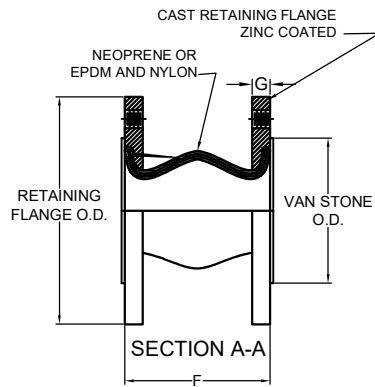


SEE NOTE 6



NOMINAL PIPE SIZE	F-INSTALLED LENGTH			ALLOWABLE MOVEMENTS FROM NEUTRAL LENGTH				PRESSURE		FLANGE/ BOLT DIMENSIONS					PART NUMBER	
	NEUTRAL LENGTH	MAXIMUM COMPRESSED	MAXIMUM EXTENDED	AXIAL COMPRESSION	AXIAL EXTENSION	±LATERAL DEFLECTION	ANGULAR DEFLECTION	POSITIVE PSIG	NEGATIVE IN. OF HG	FLANGE THICKNESS	FLANGE O.D.	BOLT CIRCLE	HOLE QTY.	HOLE SIZE	NEOPRENE	EDPM
1-1/2	6	5.500	6.375	0.500	0.380	0.500	27°	225	26	0.55	5.00	3.88	4	0.625	2800-N-1.5X6	2800-E-1.5X6
2	6	5.500	6.375	0.500	0.375	0.500	20°	225	26	0.63	6.00	4.75	4	0.750	2800-N-2X6	2800-E-2X6
2-1/2	6	5.500	6.375	0.500	0.375	0.500	17°	225	26	0.71	7.00	5.50	4	0.750	2800-N-2.5X6	2800-E-2.5X6
3	6	5.500	6.375	0.750	0.375	0.500	14°	255	26	0.71	7.50	6.00	4	0.750	2800-N-3X6	2800-E-3X6
4	6	5.250	6.500	0.750	0.500	0.500	14°	225	26	0.71	9.00	7.50	8	0.750	2800-N-4X6	2800-E-4X6
5	6	5.250	6.500	0.750	0.500	0.500	11°	225	26	0.79	10.00	8.50	8	0.880	2800-N-5X6	2800-E-5X6
6	6	5.250	6.500	0.750	0.500	0.500	9°	225	26	0.87	11.00	9.50	8	0.880	2800-N-6X6	2800-E-6X6
8	6	5.250	6.500	1.000	0.500	0.500	7°	225	26	0.87	13.50	11.75	8	0.880	2800-N-8X6	2800-E-8X6
10	8	7.000	8.625	1.000	0.750	0.750	7°	225	26	0.95	16.00	14.25	12	1.000	2800-N-10X8	2800-E-10X8
12	8	7.000	8.625	1.000	0.750	0.750	6°	225	26	0.95	19.00	17.00	12	1.000	2800-N-12X8	2800-E-12X8
14	8	7.000	8.625	1.000	0.750	0.750	5°	150	26	1.02	21.00	18.78	12	1.130	2800-N-14X8	2800-E-14X8
16	8	7.000	8.625	1.000	0.750	0.750	4°	125	26	1.10	23.50	21.25	16	1.130	2800-N-16X8	2800-E-16X8
18	8	7.000	8.625	1.000	0.750	0.750	4°	125	26	1.18	25.00	22.75	16	1.250	2800-N-18X8	2800-E-18X8
20	8	7.000	9.625	1.000	0.750	0.750	3°	125	26	1.18	27.5	25.00	20	1.250	2800-N-20X8	2800-E-20X8

## NOTES:

- ALL DIMENSIONS IN INCHES.
- PRESSURE RATING BASED ON 170 °F OPERATING TEMPERATURE WITH BURST PRESSURE APPROXIMATELY 3 TIMES OPERATING PRESSURE. (ALSO AVAILABLE WITH 4 TIMES OPERATING PRESSURE. CONTACT VMC FOR AVAILABILITY AND PRICING)
- MAXIMUM OPERATING TEMPERATURE 225 °F.
- FLOATING STEEL FLANGES DRILLED TO MATE WITH 150# ASA COMPANION FLANGES.
- FLANGES WILL BE FURNISHED WITH DRILLED HOLES AS STANDARD. TAPPED HOLES AVAILABLE SPECIAL ORDER.
- CONTROL UNITS ARE REQUIRED WHERE ALLOWABLE MOVEMENTS WILL BE EXCEEDED. UNANCHORED PIPING MUST BE RESTRAINED IN A MANNER TO PREVENT MOVEMENT IN EXCESS OF ALLOWABLE LEVELS. CONTROL RODS ARE SOLD SEPARATELY.
- FLANGES WILL BE FURNISHED WITH DRILLED HOLES AS STANDARD. TAPPED HOLES AVAILABLE SPECIAL ORDER.
- STANDARD EPDM OR NEOPRENE. OTHER MATERIALS ARE AVAILABLE.
- COMPOUNDS OR FINISHES WITH EQUAL OR SUPERIOR PROPERTIES MAY BE SUBSTITUTED AS THEY BECOME AVAILABLE.
- CONTROL RODS ARE REQUIRED WHEN USING RUBBER EXPANSION JOINTS.

**WARNING:** Expansion joints may operate in pipelines or equipment carrying fluids and or gases at elevated temperatures and pressures. Normal precautions should be taken to make sure these parts are installed correctly and inspected regularly. Precautions should be taken to protect personnel in the event of leakage or splash.

OTHER MATERIALS, COMPOUNDS, OR FINISHES WITH EQUAL OR SUPERIOR PROPERTIES MAY BE SUBSTITUTED AS THEY BECOME AVAILABLE.



## CERTIFIED FOR:

JOB NAME: \_\_\_\_\_

CUSTOMER: \_\_\_\_\_

CUSTOMER P.O.: \_\_\_\_\_

SALES ORDER: \_\_\_\_\_

MODEL 2800 RUBBER EXPANSION JOINT  
SINGLE SPHERE  
150 LBS FLANGES (NEO, EPDM)



**VMC GROUP**  
THE POWER OF TOGETHER™

Bloomington, NJ 07403  
Houston, TX 77041

SCALE:

NONE

SHEET:

1 OF 1

DRAWING NO.:

REVISION

